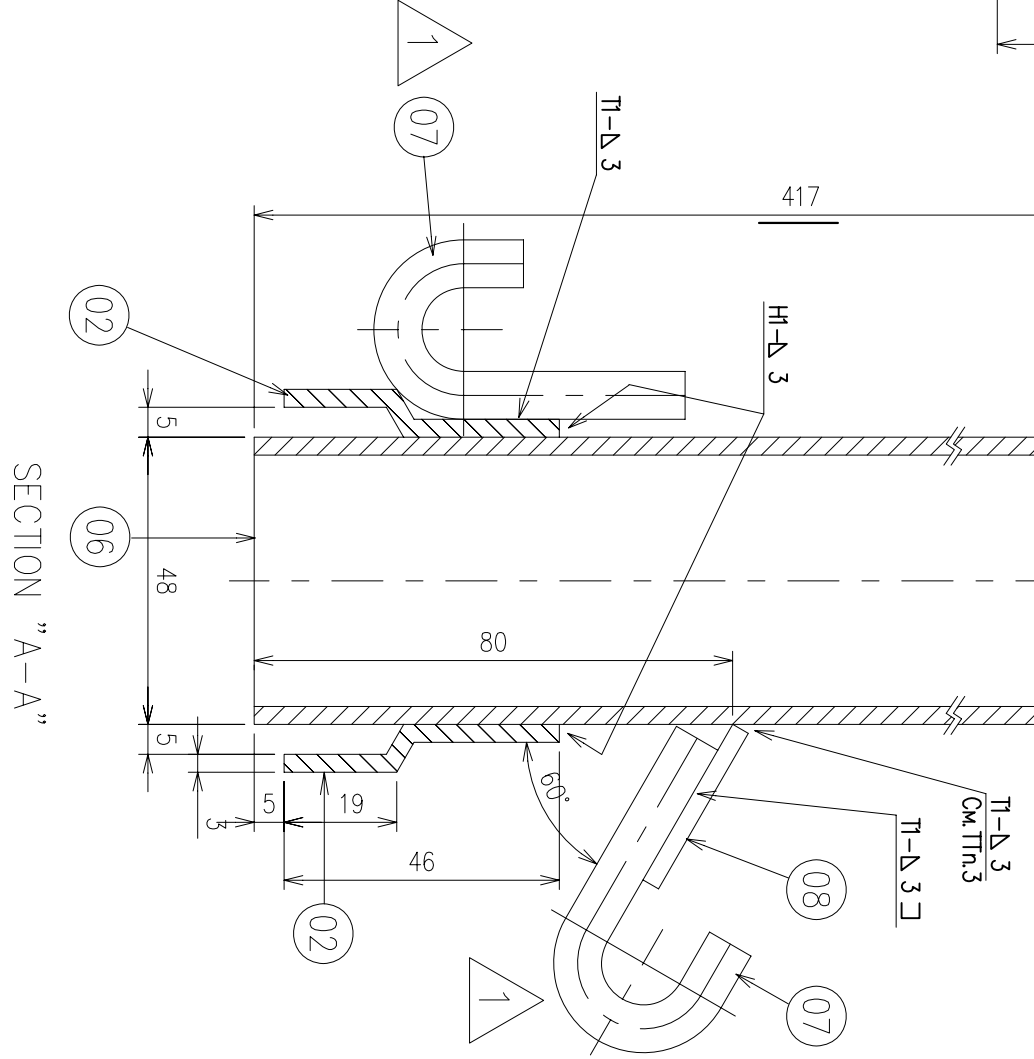


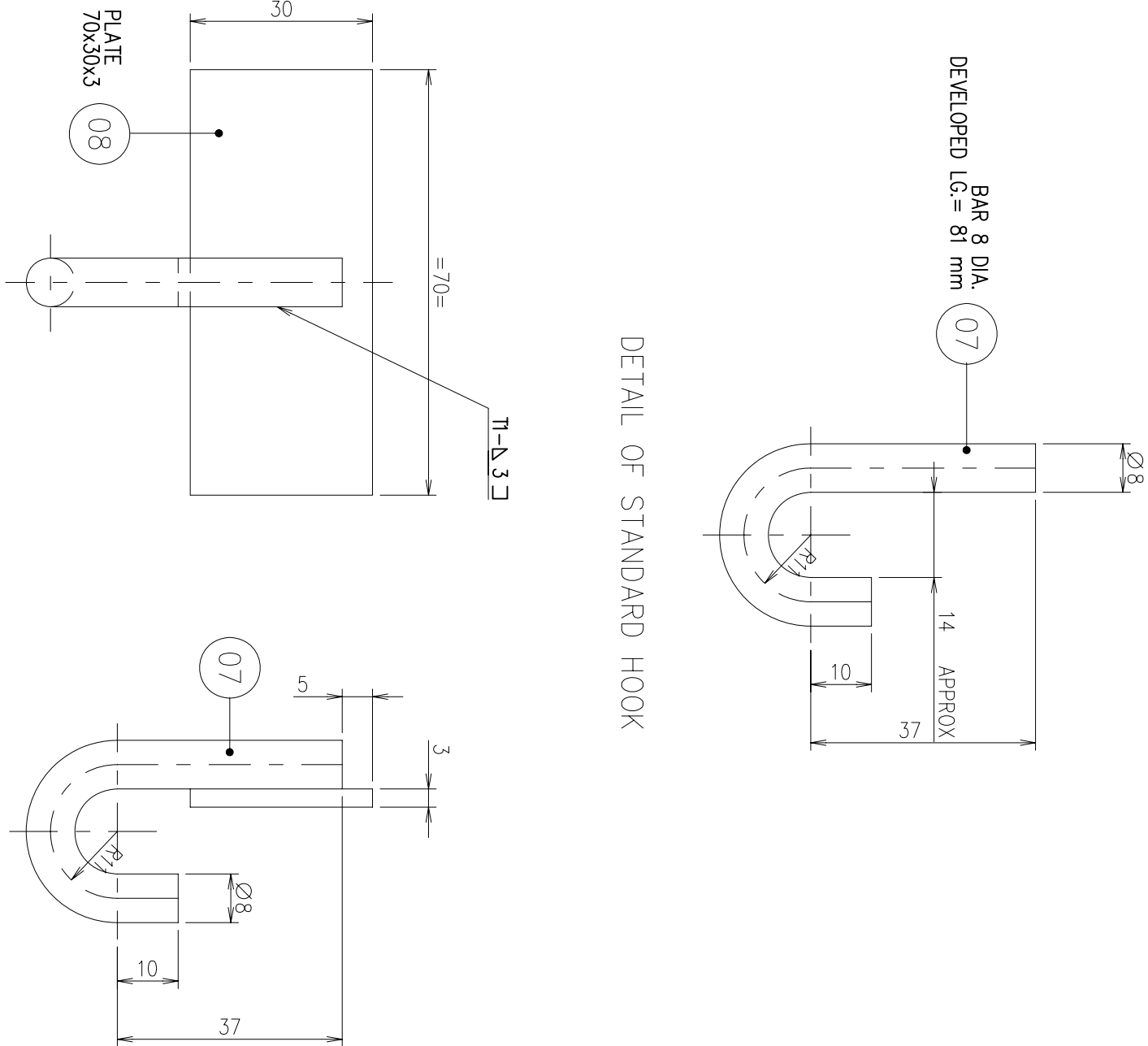
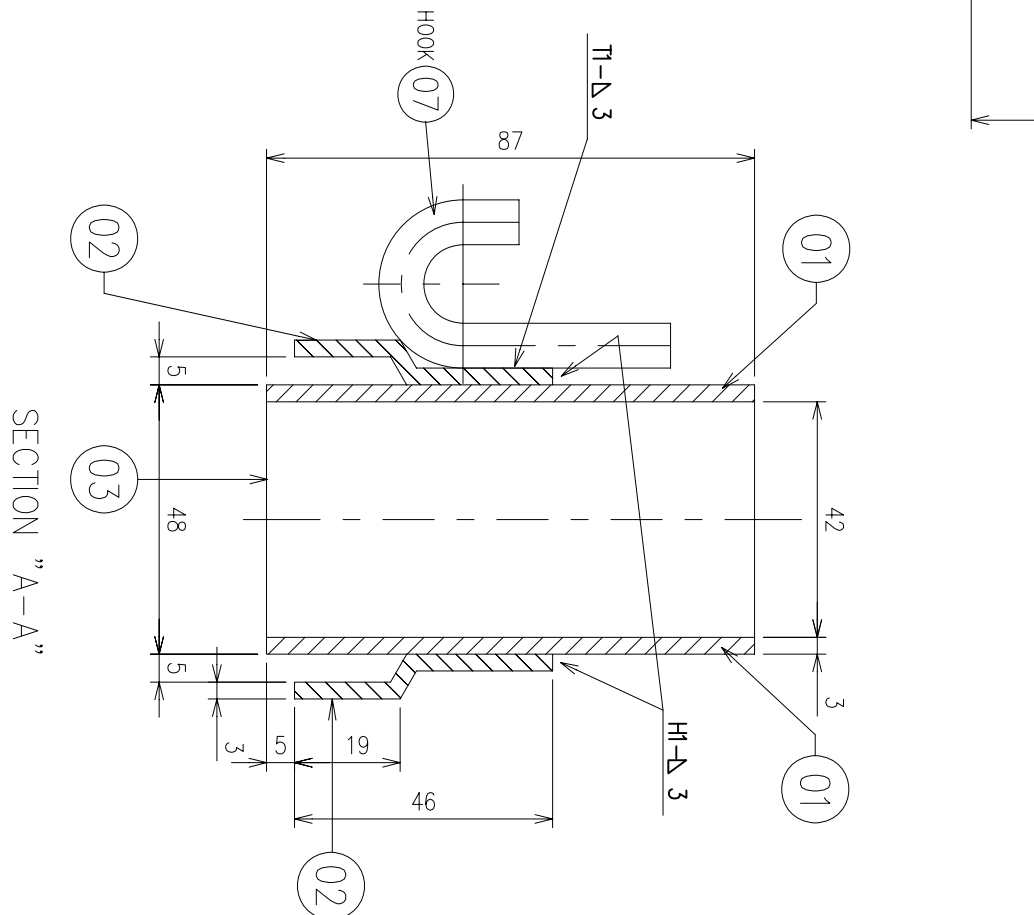
ITEM NO.	NEW DUCT NUMBER	MATERIAL
02/148	TK263-537-10-103	enasa 3hc
03/148	TK263-537-11-102	enasa 3hc
07/148	TK263-537-P-102	enasa 3hc

TK263-537-11-101



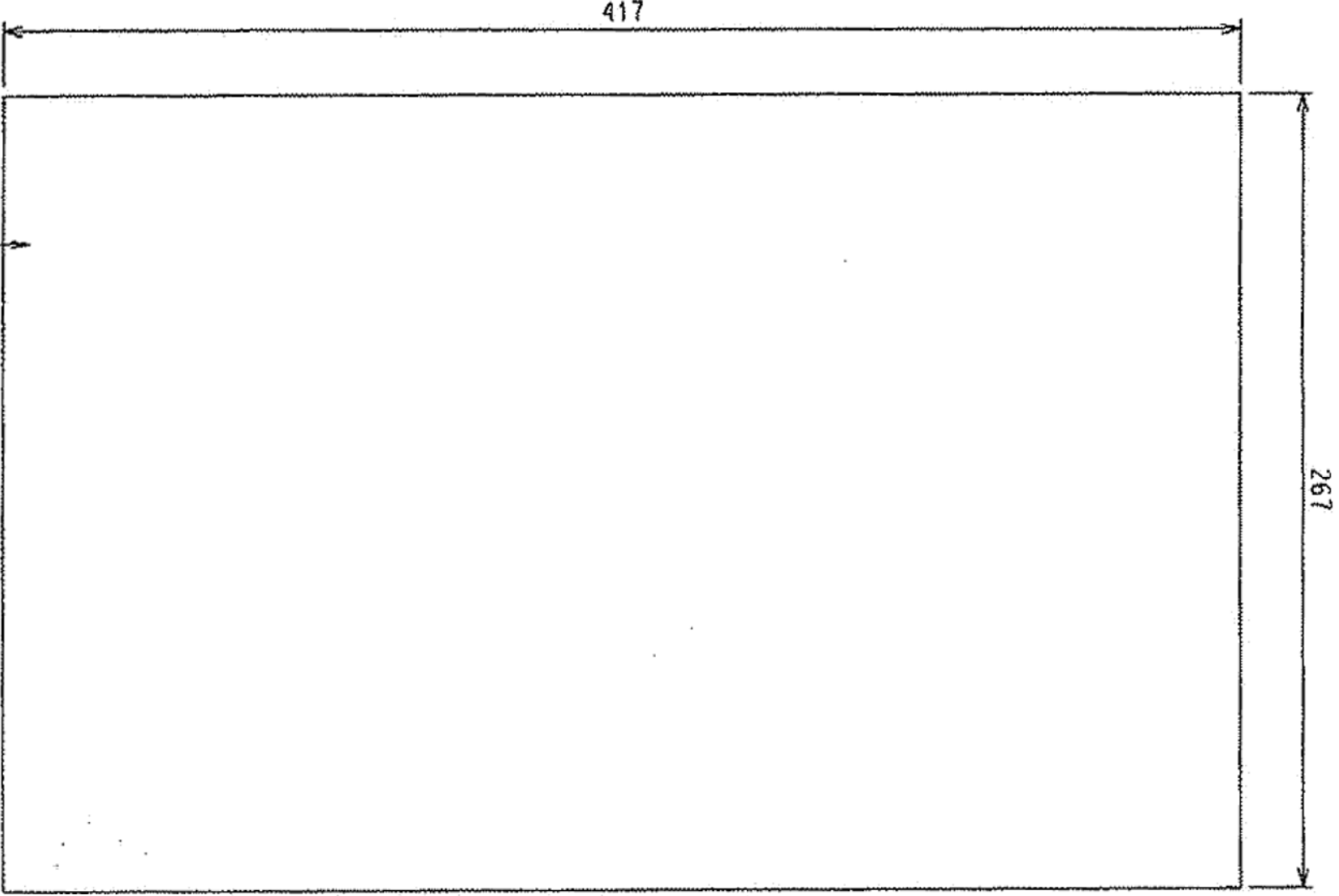
ITEM NO.	NEW DUCT NUMBER	MATERIAL
02/148	TK263-537-10-102	enasa 3hc
07	TK263-537-P-102	enasa 3hc

TK263-537-10-104

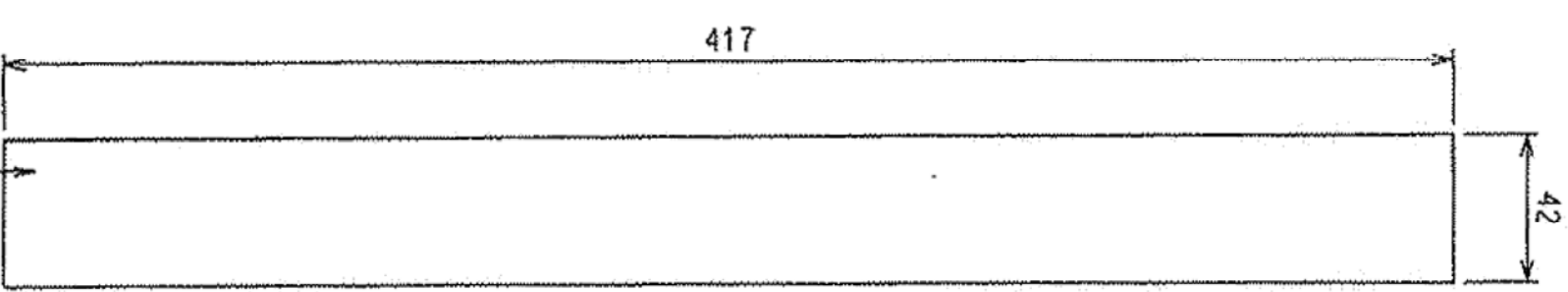


DETAIL OF STANDARD HOOK WITH REINFORCING PLATE

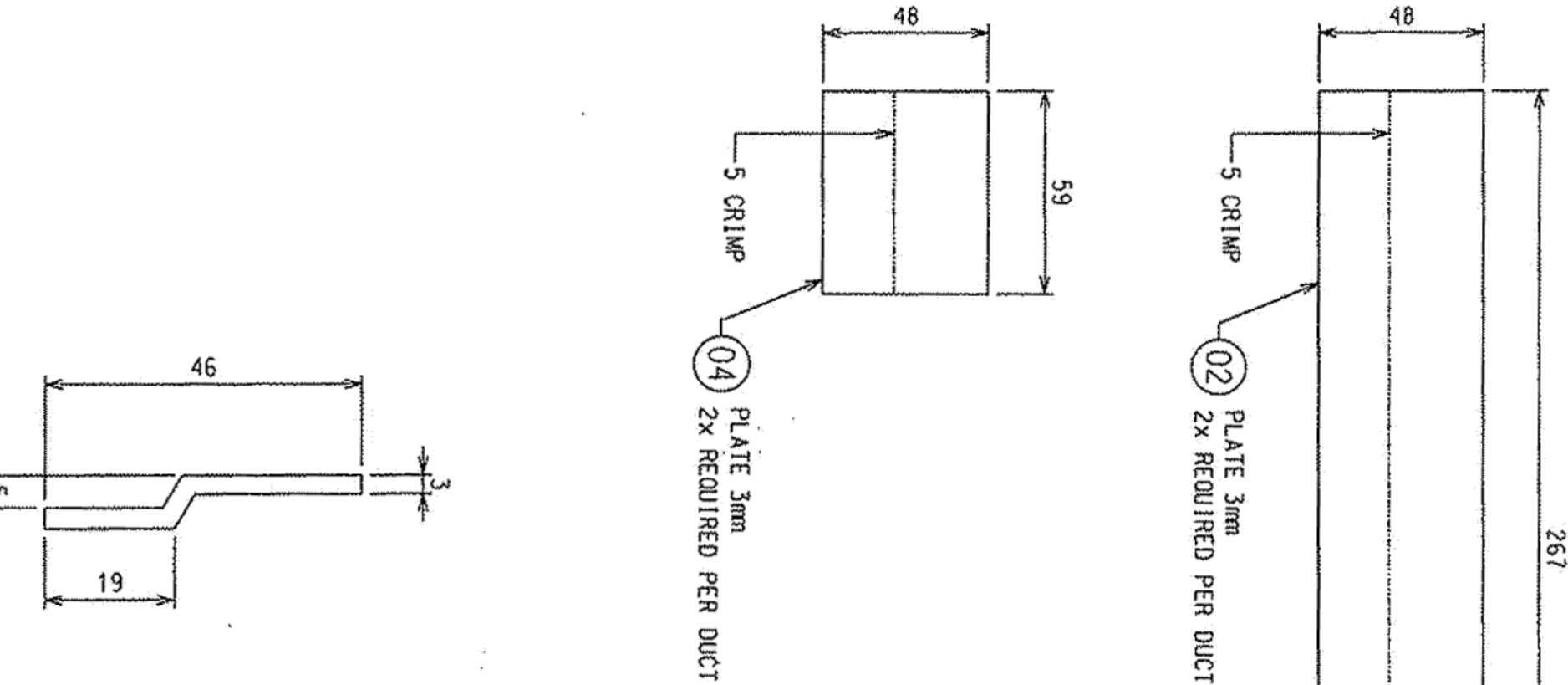
TK263-537-12-102



3mm PLATE  
2X REQUIRED FOR ONE DUCT

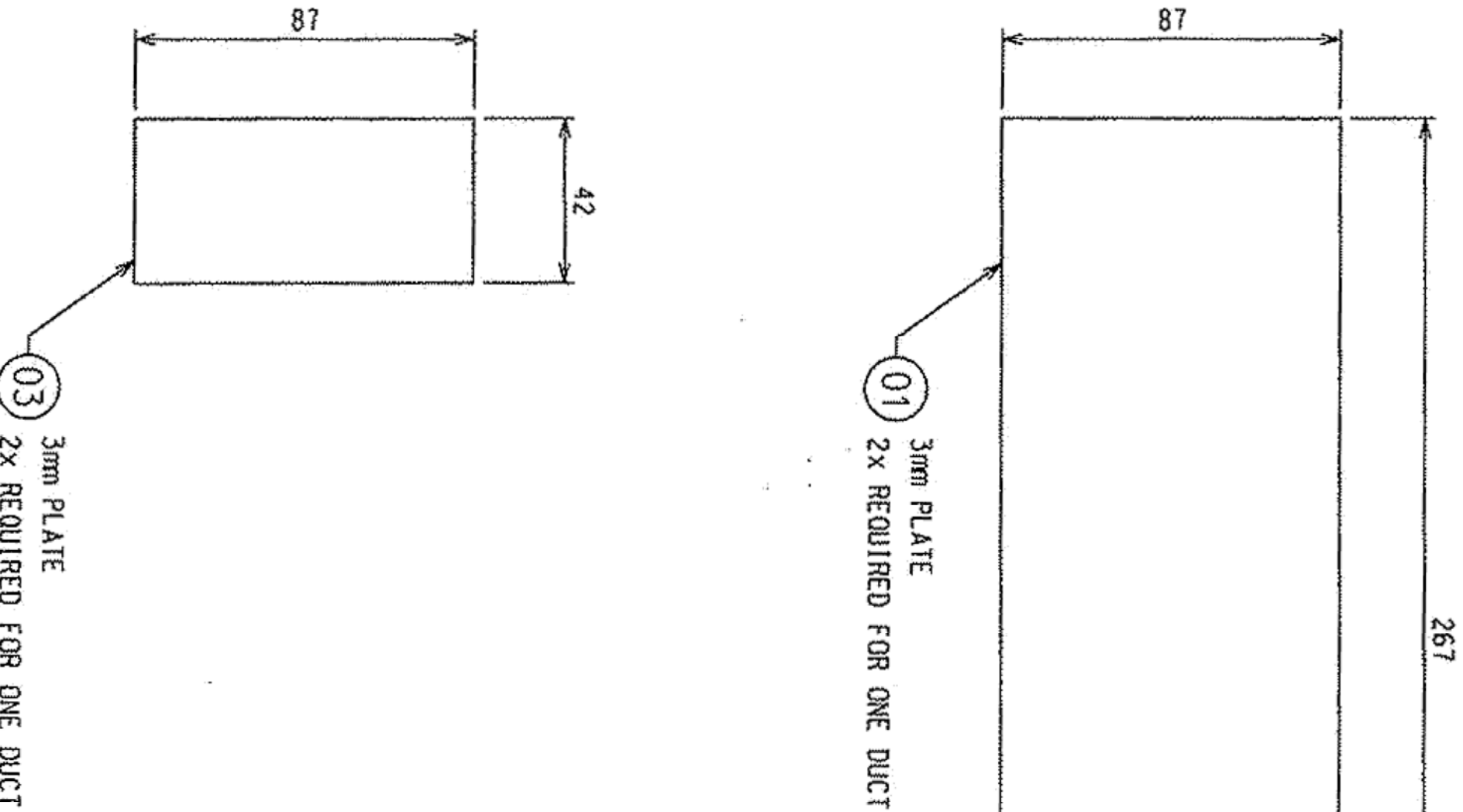


3mm PLATE  
2X REQUIRED FOR ONE DUCT



FORMED VIEW

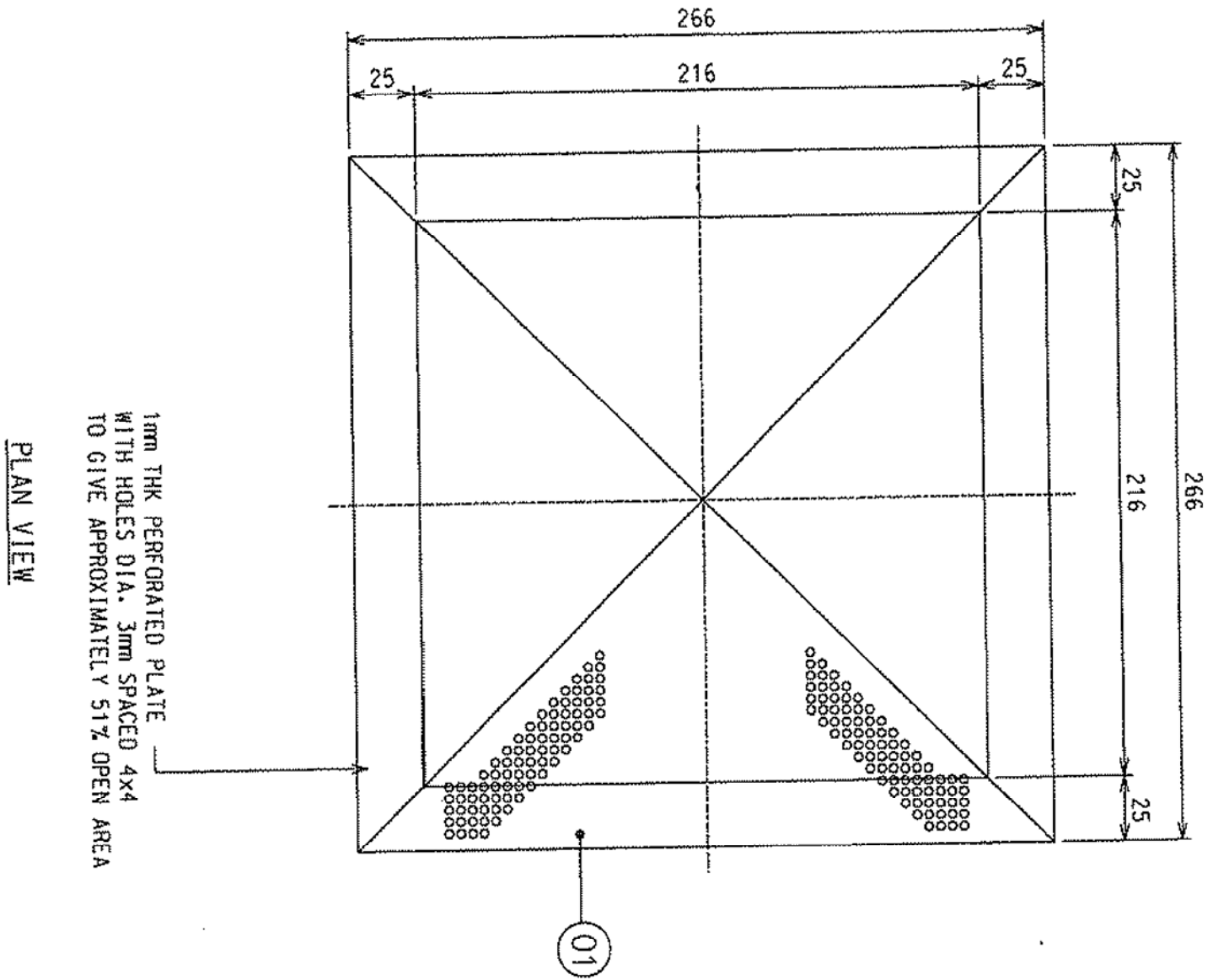
TK263-537-10-103



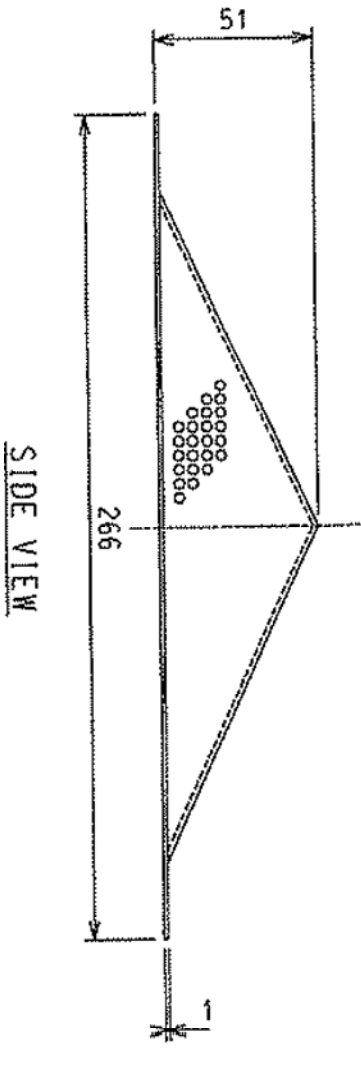
3mm PLATE  
2X REQUIRED FOR ONE DUCT

3mm PLATE  
2X REQUIRED FOR ONE DUCT

TK263-537-10-102



1mm THK PERFORATED PLATE  
WITH HOLES DIA. 3mm SPACED 104  
TO GIVE APPROXIMATELY 51% OPEN AREA

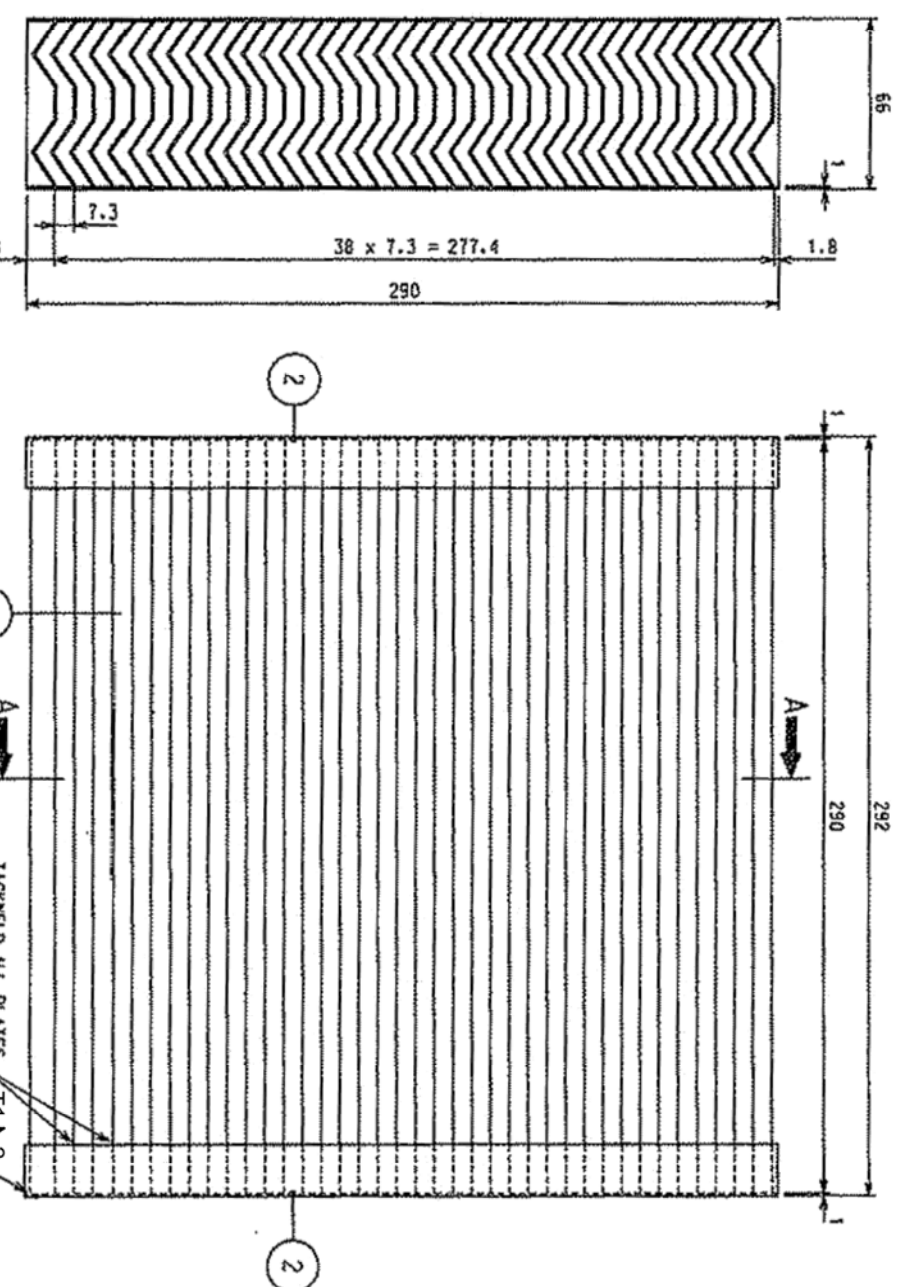


SLIDE VIEW

ITEM NO.	MATERIAL
01	enasa 3hc

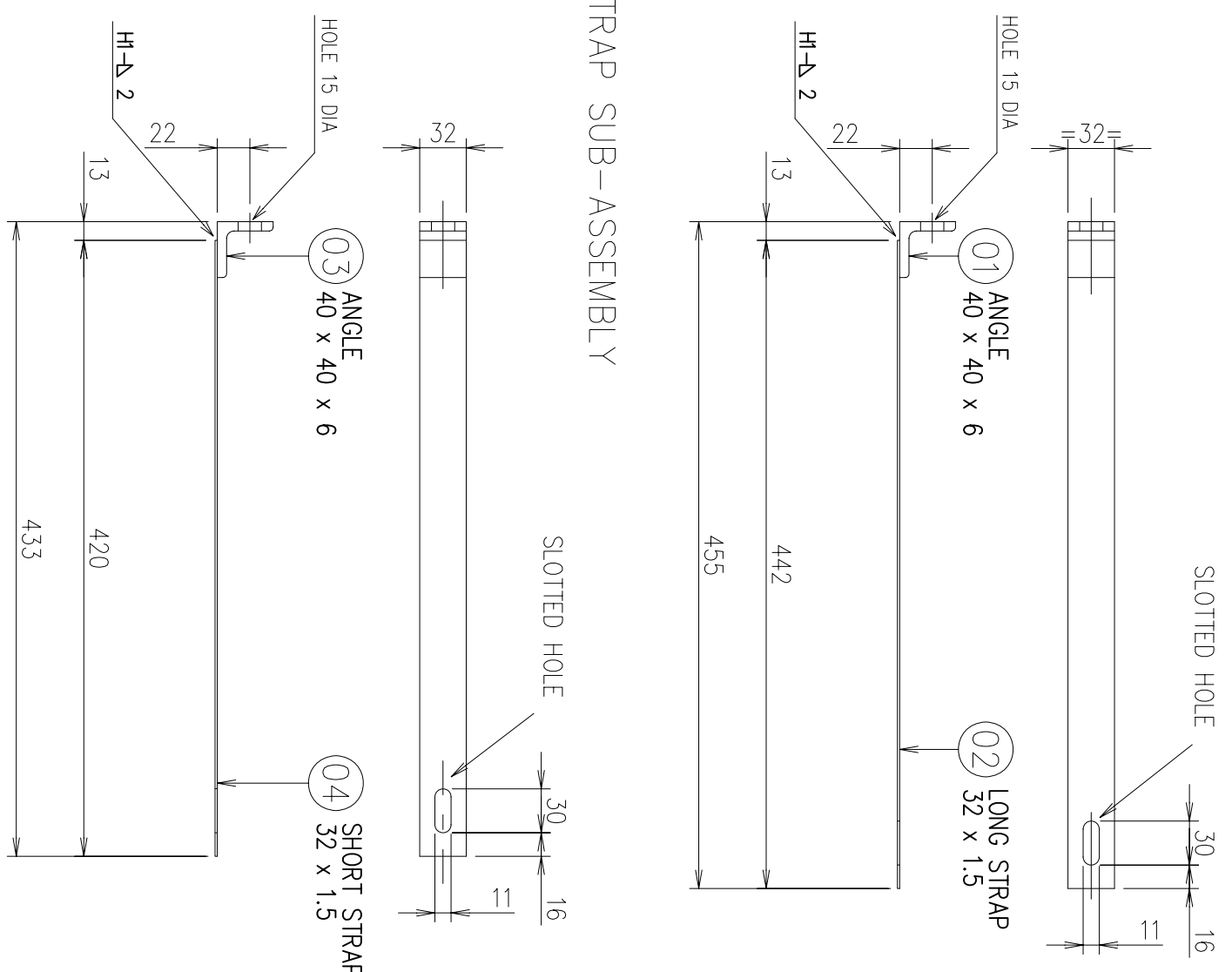
TK263-537-08-101

LONG STRAP SUB-ASSEMBLY



SEPARATION SCRUBBER ASSEMBLY

CONNECTION DETAIL



STRAP SUB-ASSEMBLY

STRAP SUB-ASSEMBLY

TK263-537-12-101

ITEM NO.	MATERIAL
01	enasa 3hc
02	enasa 3hc

TK263-537-09-101

ITEM NO.	MATERIAL
01	enasa 3hc
02	enasa 3hc